

Appendix D9
Revised Stage II Archaeological Assessment
of Big Falls, Trout Lake River,
District of Kenora
(Patricia Portion, Woodland Heritage, 2008)

**Revised Stage II Archaeological Assessment of
Big Falls, Trout Lake River, District of Kenora, Patricia Portion**

Prepared for
Bruce A. MacTavish, P.Eng.
Manager, Ontario Wind and Power
Hatch Energy
4342 Queen Street, 5th Floor
P.O. Box 1001
Niagara Falls, ON L2E 6W1
P: 905-374-0701 ext 5631
E: bmactavish@hatchenergy.com

Submitted and Written by
Luke Dalla Bona
Woodland Heritage Services Limited
248 Queen Street East
Sault Ste. Marie Ontario
P6A 1Y7

Telephone: (705) 256-5418 Fax: (705) 256-7254
E-Mail: luke@woodlandheritage.com

**Province of Ontario, Licence to
Conduct Archaeological Exploration or
Field Work No. P065-085-2008
(Woodland Heritage Services Limited)**

December 18, 2008

TABLE OF CONTENTS

Abstract	1
1.0 Part I - Background Data.....	2
1.1 Archaeological Licence Regulations	2
1.2 Introduction and Record Review	3
2.0 Part II - Cultural Heritage Assessment	4
2.1 Stage II Field Assessment.....	4
2.2 Description of the Study Area.....	4
2.3 Field Methodology	5
2.4 Archaeological Findings	6
3.0 Recommendations	7
Figure 1	8
Figure 2	9
Figure 3	10
Figure 4	11
Figure 5	12
Figure 6	13
Figure 7	14
Figure 8	15
Figure 9	16
Figure 10	17
Figure 11	18
Figure 12	19
Figure 13	20
Figure 14	21
Figure 15	22
Figure 16	23
Figure 17	24

ABSTRACT

TITLE: Stage II Archaeological Assessment Big Falls, Trout Lake River, District of Kenora, Patricia Portion

NAME OF LICENCE HOLDER: Luke Dalla Bona, M.A

CONSULTING ARCHAEOLOGIST: Luke Dalla Bona, M.A.

FIELD ASSISTANT: Charlie Binguis

CORPORATE AFFILIATION: Woodland Heritage Services Limited
248 Queen Street East
Sault Ste. Marie, Ontario
P6A 1Y7

TELEPHONE: 705-256-5418

FAX: 705-256-7254

E-MAIL: luke@woodlandheritage.com

LICENCE NUMBER: P065-2008

TYPE OF LICENCE: Consulting, Province of Ontario

C.I.F. #: P065-085-2008

LOCATION OF ACTIVITY: Big Falls, Trout Lake River, District of Kenora

DATE OF ACTIVITY: October 17-19, 2008

METHODOLOGY: A Stage II field visit was carried out at this location.

RESULTS: No registered cultural heritage resources were identified in the development area.

MITIGATIVE MEASURES: No further work is recommended.

1.0 PART I - BACKGROUND DATA

Hatch Energy of Niagara Falls, Ontario contracted Woodland Heritage Services Limited to conduct a Stage II assessment at the location of a proposed hydroelectric development at Big Falls, on the Trout Lake River, northeast of Ear Falls in the District of Kenora (Patricia Portion) (Figures 1-5). This work is being done under our Ontario license to conduct archaeological assessments, #P065-085-2008. We had all necessary permission to access the land to conduct our work. During the survey, the weather was quite agreeable and did not in any way hamper our ability to do our work.

Field work was carried out on from October 17-19, 2008. The work was conducted by Luke Dalla Bona of Woodland Heritage Services Limited with the assistance of Charlie Binguis (Lac Seul First Nation).

The cultural heritage assessment work described in this report follows the requirements under the *Planning Act* (Section 2d, Policy 2.5.2), the *Environmental Assessment Act* (Section 5(3)(c)) and the *Ontario Heritage Act* for Stage II archaeological assessment. The Stage II work was undertaken under our Province of Ontario consulting licence (Luke Dalla Bona, Archaeological Licence P065-2008) and provides the project proponents and the Ministry of Culture (MCL) report reviewers with information about the known and potential cultural heritage resources within study areas. All heritage reports must be reviewed under regulations.

A Stage I assessment was conducted by Boreal Heritage Consulting (PIF: P073-136-2008) in which a Stage II assessment was recommended.

1.1 Archaeological Licence Regulations

Recommendations: Any recommendation made in this report are subject to approval by the Minister responsible for the *Ontario Heritage Act, R.S.O. 1990*. Pursuant to Section 65(1) of the *Act*, it is required that the licensee will include in any report the following: a statement of impacts that the proposed undertaking may reasonably be expected to have upon archaeological heritage, any recommendations made to the proponent regarding the protection, preservation or conservation of archaeological heritage in the area of the undertaking, and a statement of the reasons for those recommendations.

Site Record Form: Every newly discovered site must be recorded on an Archaeological Site Record Form. Each site revisited or previously recorded must be documented on a Site Update Sheet.

Prior Notice: The licensee must, before initiating field work on a particular undertaking, provide the Ministry of Culture (MCL) with notice concerning the identity of the proponent and/or contractor, the identity of the Project Director, the nature, purpose, location, duration and extent of the planned field work, the anticipated staffing of the project, and the details of special arrangements or conditions of the contract. Before commencing field work, the licensee must receive confirmation of receipt of this notice from MCL.

Human Remains: An archaeological licence does not authorize disinterment of human remains. Disinterment must be conducted in compliance with the *Cemeteries Act, R.S.O. 1990, C. C.4* and the Ministry of Consumer and Commercial Relations.

Archaeological licences are issued pursuant to the *Ontario Heritage Act, R.S.O. 1990, C. 0.18*, and are subject to the provisions of this *Act*. Licences are not transferable.

2.0 PART II - CULTURAL HERITAGE ASSESSMENT

2.1 Stage II - Archaeological Field Assessment

A Stage II field assessment provides the consulting archaeologist (must be licensed under the *Ontario Heritage Act*) and the Ministry of Culture (MCL) report reviewer with an inventory of all archaeological sites present on the subject property. As part of the Stage II field assessment study, the consulting archaeologist shall:

- conduct pedestrian surveys at transects of 5 to 10 metres depending upon the landscape
- conduct subsurface test pit excavations at intervals of 5 metres (in areas of high cultural heritage potential) to 10 metres depending upon the landscape and the degree of potential for encountering cultural heritage remains.

When encountering archaeological remains during the Stage II assessment, the survey must be intensified around the area of the find to determine if it is isolated or is a part of a larger artifact scatter. If artifacts found during Stage II are isolated finds or part of a site that obviously will not require further investigations, artifact locations shall be mapped and all diagnostics shall be retained.

However, if the artifact is part of a larger surface scatter, or associated with multiple artifact yielding pits, then additional (Stage III) documentation of this location is required.

2.2 Description of the Study Area

The proponent is proposing to construct a run-of-the-river hydroelectric facility at Big Falls on the Trout Lake River, approximately 35 km northeast of Ear Falls. The facility will include an overflow weir, power house and transmission lines. The site of Big Falls is within view of a primary forest access road and access to the locality was quite easy. A small parking lot and hiking trail allowed for excellent access to the east side of the falls. The west side of the falls was easily accessed using a canoe. Due to its run-of-the-river construction, this hydroelectric facility will not result in a major reservoir upstream from the dam. According to Hatch Energy, water levels will be raised a maximum of 4 metres upstream from the dam. It should be noted that all construction (excepting the weir at the top of the falls) is proposed to occur on the east side of the falls.

Upstream from the top of the falls, Trout Lake River follows a winding but relatively deeply carved valley (5-7 metres deep) that has been cut through the surrounding clays for millenia. The terrain on the west side of the falls is relatively flat, vegetated by an overmature stand of poplar and conifers

with localized thick stands of secondary undergrowth. The east side of the falls is also vegetated in a similar manner with the exception that a nearby logging operation has resulted in open harvest areas and significant areas of blowdown/tree falls along its margins. The terrain on the east side is rougher and more undulating but easily accessible due to a hiking trail constructed to observe the falls.

Big Falls is a large waterfall that spills south over the Ear Falls Moraine. It is a 'fan shape' and is actually a series of numerous falls/rapids that make two major drops forming pools at the middle level. At its lowest level, the falls are split by a large island that is approximately 200m east/west and 50-75 north/south.

Aesthetically, it is a very pleasing location. There is undoubtedly a good fishery that exists here today and fish, including game species, are likely to be attracted to the falls area. From a water-based travel perspective, it is a barrier that without doubt, would have required portaging around. The most obvious location for the portage is the western side of the falls, where the land gently rises and is relatively flat. A modern portage trail, rutted with ATV tracks currently exists on the western side of the falls.

2.3 Field Methodology

The locality was visited on October 17-19, 2008. GPS coordinates were taken throughout the study area, test pits excavated where possible and photographs were taken. Our survey consisted of three main goals.

- 1) Survey the east and west sides of the falls to identify any culturally significant portages/trails or features - especially on the east side where development impacts are proposed;
- 2) Survey the area upstream from the falls to determine the cultural heritage potential of this area and/or if any cultural resources would be impacted by the proposed reservoir;
- 3) Survey the island at the base of the falls to attempt to re-identify the location of EfKg-1. The existence of this site was noted in the Stage 1 report by Boreal Heritage Consulting. Note that several requests have been made to MCL to provide additional information about EfKg-1. To date no response has been received.

2.4 Archaeological Findings

All test pits proved negative. We did not observe any artifacts on the surface. We did not observe any features that would be associated with significant cultural materials or that could be construed as having cultural significance.

On the west side of the falls, an existing portage trail does exist. This trail is/has been used by wheeled vehicles (ATVs) and perhaps forms part of a snowmobile trail as well. At the southern end of this portage, adjacent to the river, a landing area is strewn with recent detritus including glass/plastic bottles, cans and other food related metal and various plastic containers. While it is possible (or likely) that a more ancient portage trail exists in/near this location (as it is the most appropriate place for it) we did not find any evidence for it.

On the east side of the river, we did not find any evidence for any historic trails or portages. A modern walking trail (with disintegrating signage) exists, the surrounding terrain does not support the presumption that portages were effected on this side of the river.

Upstream from the falls, the steepness of the river banks make it unlikely that the campsites were located atop them. The steepness of the banks coupled with the clay soils make this area wholly unsuitable - especially considering that campsites located below the falls would be better sheltered from the weather as well as taking advantage of the good fishery at the base of the falls.

Nothing of any consequence was found in the area immediately adjacent to the proposed weir/dam construction.

A comprehensive survey was taken on the island at the base of the falls. Numerous test pits were excavated. All were negative. While a site is recorded as existing on this island (EfKg-1), in the absence of any more detailed information from the Ministry of Culture, we can not shed any more light on this site. Fortunately, the proposed development will not impact this island in any way.

3.0 Recommendations

i) It is recommended that there be no further archaeological concern with regards to the proposed hydroelectric development at Big Falls, Trout Lake River. Should development plans change to affect the island at the base of the falls (the location of EfKg-1), then further archaeological work is recommended to precisely locate that site and conduct appropriate mitigation.

ii) As required by the Ministry of Culture regulations under the *Ontario Heritage Act*, all archaeological reports must state that should human remains be identified during operations, all work in the vicinity of the discovery will be suspended immediately. Notification will be made to the Ontario Provincial Police, or local police, who will conduct a site investigation and contact the district coroner. Notification should also be made to the Development Plans Review Office, Ministry of Culture, Heritage and Libraries Branch, Heritage Operations Unit, 400 University Avenue, 4th Floor, Toronto, Ontario M7A 2R9, and the Registrar of Cemeteries, Ministry of Consumer and Commercial Relations. Other government staff may be contacted as appropriate, however media contact should not be made in regards to this discovery.

Should other cultural heritage values (e.g., archaeological or historical materials) be identified during operations, all activity in the vicinity of the recovery will be suspended and the Ministry of Culture archaeologist contacted. This condition provides for the potential for deeply buried or enigmatic local site areas not typically identified in evaluations of potential.

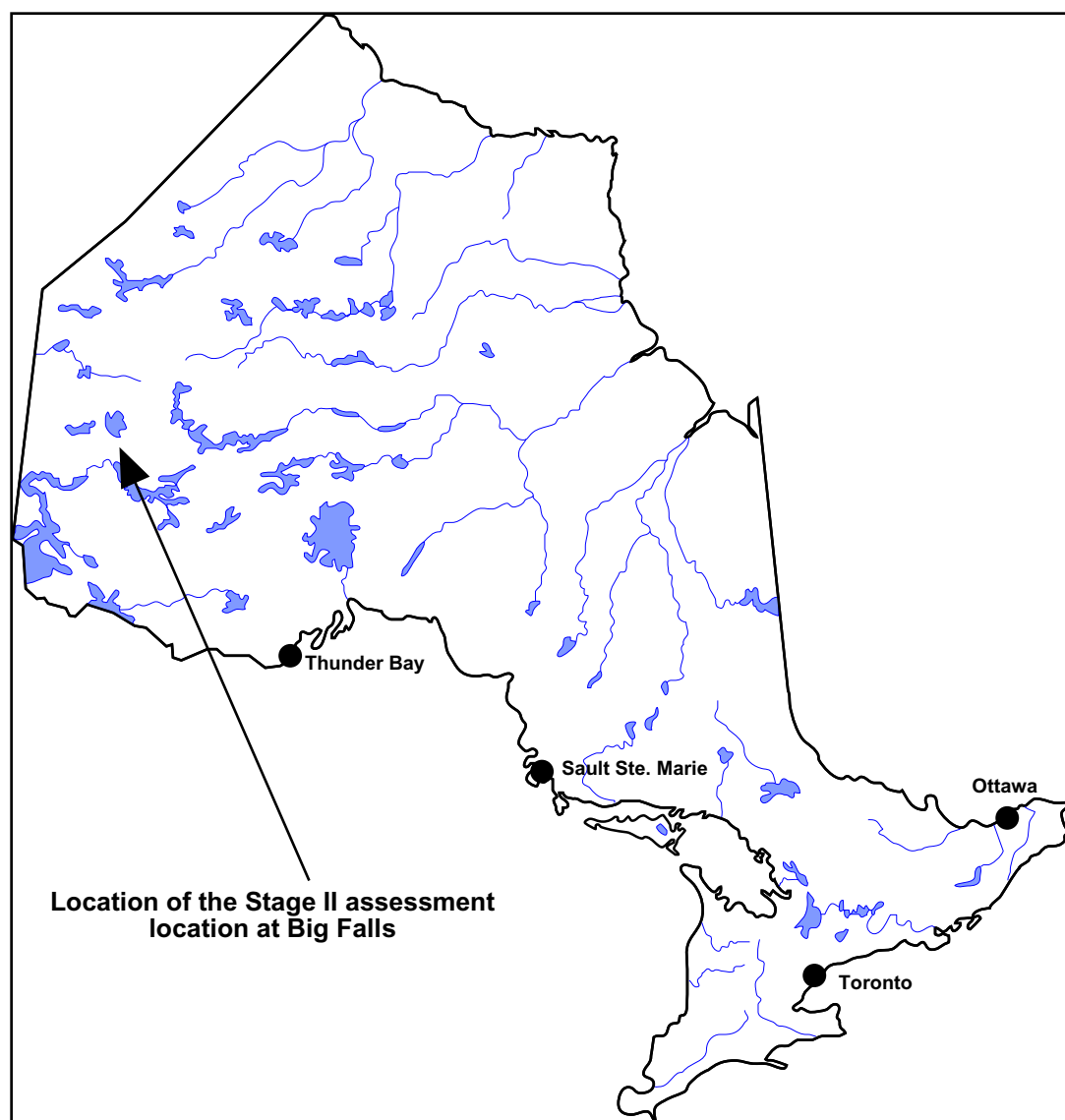


Figure 1. Location of the proposed development at Big Falls, Trout Lake River.



Figure 2. Map showing the location of the proposed development on Trout Lake River.

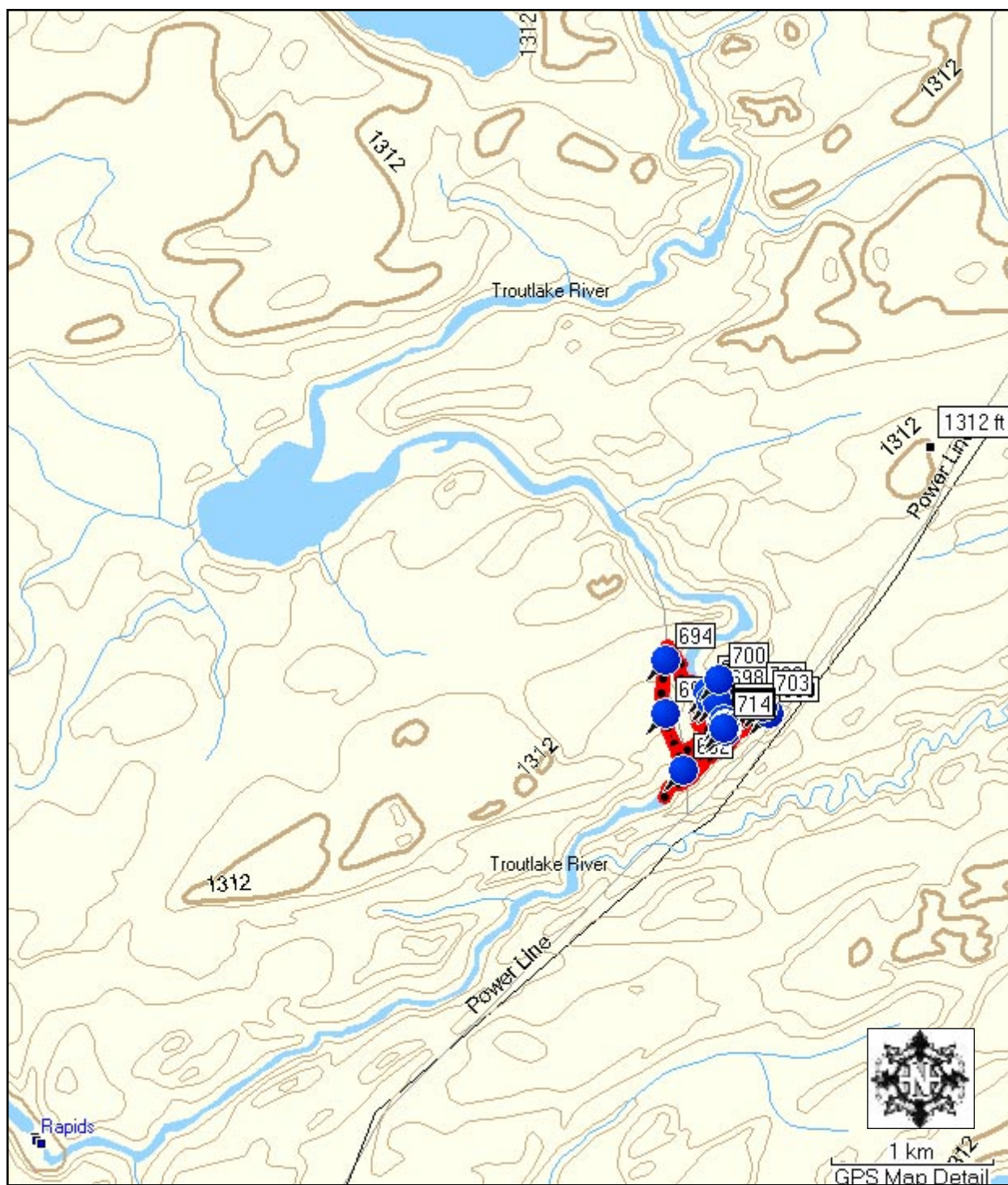
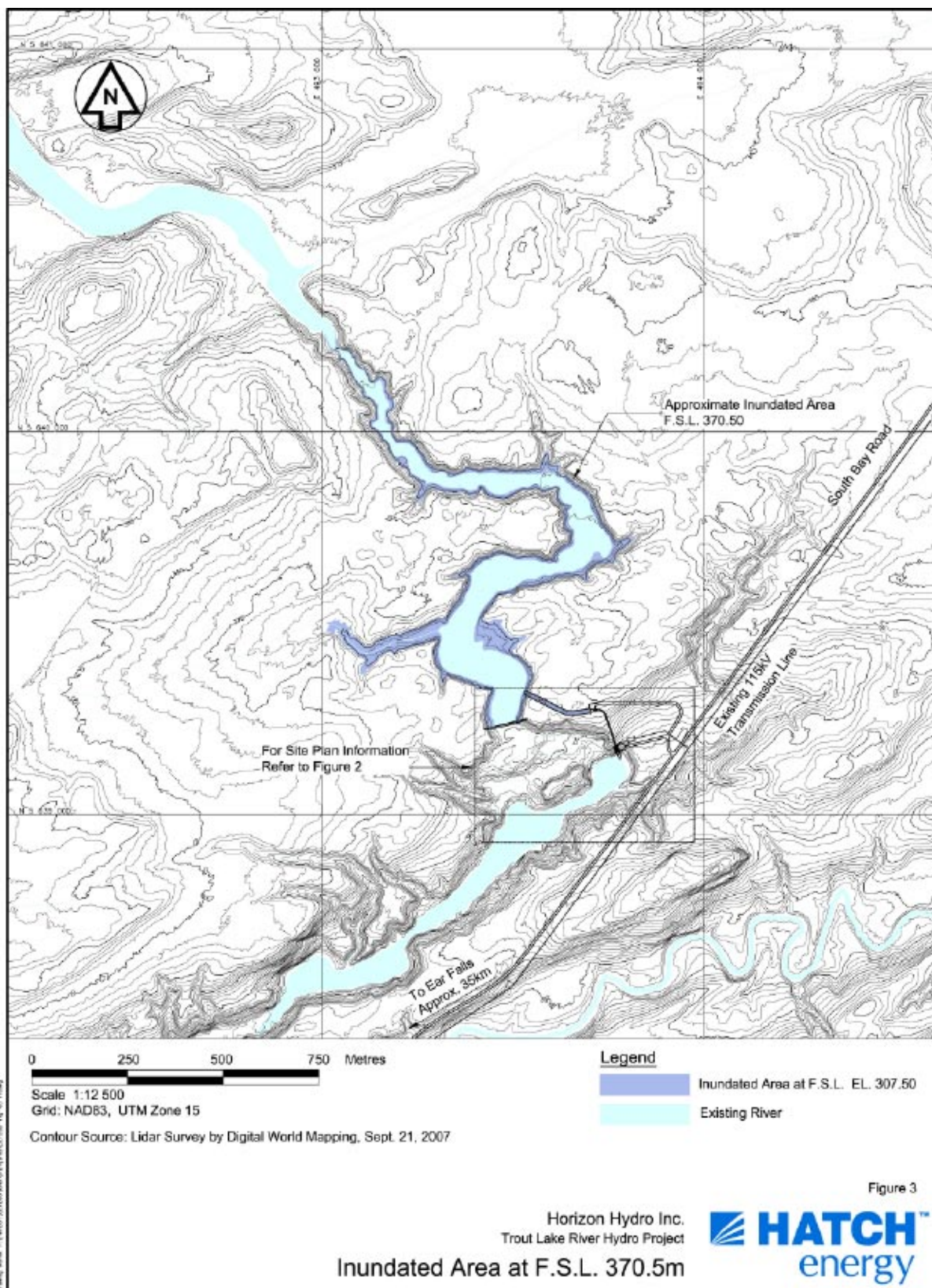


Figure 3. Specific location of the proposed development on Trout Lake River.



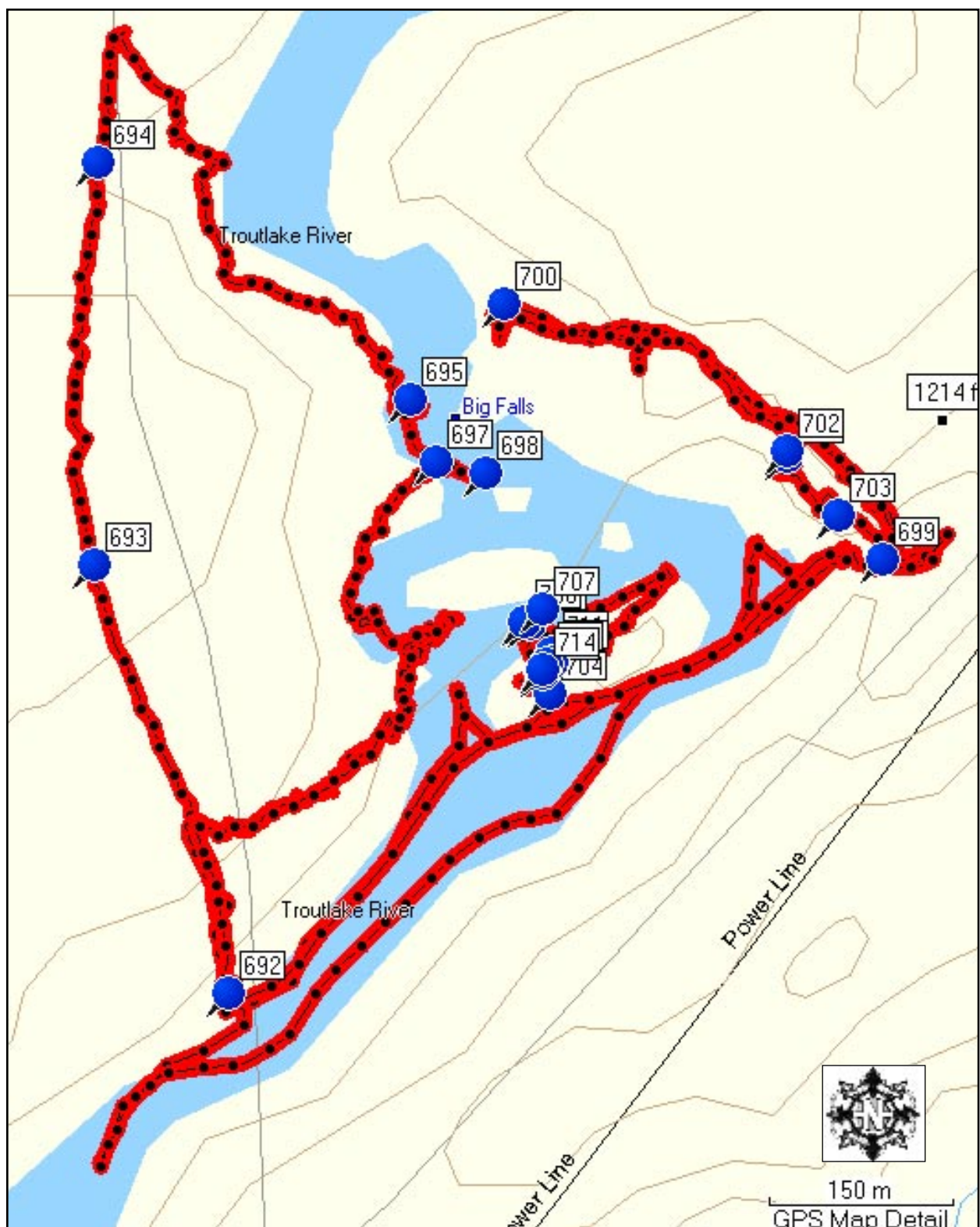


Figure 5. Map indicating the general areas surveyed at Big Falls, Trout Lake River.



Figure 6. Map indicating the survey undertaken on the island at the base of the falls, Big Falls, Trout Lake River.



Figure 7. East side of Big Falls - upper section.



Figure 8. East side of Big Falls - lower section.



Figure 9. West side of Big Falls - upper section.



Figure 10. West side of falls, middle section.



Figure 11. West side of falls, lower section.



Figure 12. Looking down river from about 50m downstream from the falls - Trout Lake River.



Figure 13. Looking at the top of the falls at the approximate location where the weir will be constructed. Note the steep banks on the opposite shore.



Figure 14. Looking upstream from the approximate position where the weir will constructed - Trout Lake River.



Figure 15. Charlie Binguis excavating test pits on the island at the base of the falls - Trout Lake River.



Figure 16. Some of the test pits excavated on the island at the base of Big Falls, Trout Lake River.



Figure 17. Charlie Binguis in the canoe, approaching the western falls, lower section, Trout Lake River.

Culture Programs Unit
Programs and Services Branch
Culture Division
435 S. James St., Suite 334
Thunder Bay, ON, P7E 6S7
Telephone: 807-475-1632
Facsimile: 807-475-1291

Unité des programmes culturels
Direction des programmes et des services
Division de culture
435 rue James sud, Bureau 334
Thunder Bay, ON, P7E 6S7
Téléphone: 807-475-1632
Télécopieur: 807-4751291



Email: andrew.hinshelwood@Ontario .ca

January 31, 2013

Luke Dalla Bona
Woodland Heritage Services Limited
69 Landsdowne Ave.
Sault Ste. Marie, ON P6B 1K5

**RE: Review and Entry into the Ontario Public Register of Archaeological Reports:
*Revised Stage II Archaeological Assessment of Big Falls, Trout Lake River, District of
Kenora, Patricia Portion.* Report dated December 18, 2008, received by MTCS Toronto
office December 30, 2009.**

**MTCS Project Information Form Number P065-085-2008
MTCS RIMS HD00088**

Dear Luke,

This office has reviewed the above-mentioned report, which has been submitted to this ministry as a condition of licensing in accordance with Part VI of the Ontario Heritage Act, R.S.O. 1990, c 0.18. This review has been carried out in order to determine whether the licensed professional consultant archaeologist has met the terms and conditions of their licence, that the licensee assessed the property and documented archaeological resources using a process that accords with the 1993 *Archaeological Assessment Technical Guidelines* set by the ministry, and that the archaeological fieldwork and report recommendations are consistent with the conservation, protection and preservation of the cultural heritage of Ontario.*

The report documents the Stage 2 archaeological assessment of the proposed hydroelectric installation and portions of the resulting headpond at Big Falls, Trout Lake River, as depicted in Figure 3 and 4 of the above titled report, and recommends the following:

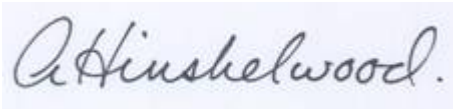
- It is recommended that no further archaeological concern with regards to the proposed hydroelectric development at Big Falls, Trout Lake River.

- Should the development plans change to affect the island at the base of the falls (the location of EfKg-01), then further archaeological work is recommended to precisely locate that site and conduct appropriate mitigation.

Based on the information contained in the report, the ministry is satisfied that the fieldwork and reporting for the archaeological assessment are consistent with the ministry's 1993 Archaeological Assessment Technical Guidelines and the terms and conditions for archaeological licences. This report has been entered into the Ontario Public Register of Archaeological Reports. Please note that the ministry makes no representation or warranty as to the completeness, accuracy or quality of reports in the register.

Should you require any further information regarding this matter, please feel free to contact me. For further guidance on the Standards and Guidelines and the Terms and Conditions for Archaeological Licences please visit the ministry's website www.ontario.ca/archaeology.

Yours,

A handwritten signature in dark ink, reading "A Hinshelwood.", is displayed on a light blue rectangular background.

Andrew Hinshelwood
Archaeology Review Officer

cc. Archaeology Licensing Officer
Noel Boucher, Hatch (NBoucher@Hatch.ca)

* In no way will the Ministry be liable for any harm, damages, costs, expenses, losses, claims or actions that may result: (a) if the Report(s) or its recommendations are discovered to be inaccurate, incomplete, misleading or fraudulent; or (b) from the issuance of this letter. Further measures may need to be taken in the event that additional artifacts or archaeological sites are identified or the Report(s) is otherwise found to be inaccurate, incomplete, misleading or fraudulent.